

# 6.20 mm. POWER PLUG/RECEPT. HOUSING



## 6200 SERIES. 6.20 mm. (0.244") Pitch.

### General Features

- Available in 2, 3, 4(2x2), 4(1x4), 6(2x3), 8(2x4), and 12(2x6) pins
- Mates with 6.20 mm. pitch 6200 crimp housing and 6.20 mm. header 6205 series
- Use crimp terminal 6201 and 6202 series
- Polarised with positive locking system
- Allows wire to wire and wire to PCB connections
- Inner-housing lock and outer-housing lock
- Applicable panel thickness: 0.80 to 2.0 mm.

### Materials

- Insulator: Nylon UL 94 V-0
- Retainer: Nylon 66 UL94V-0
- Operating temperature: -40°C to +105°C
- RoHS compliant

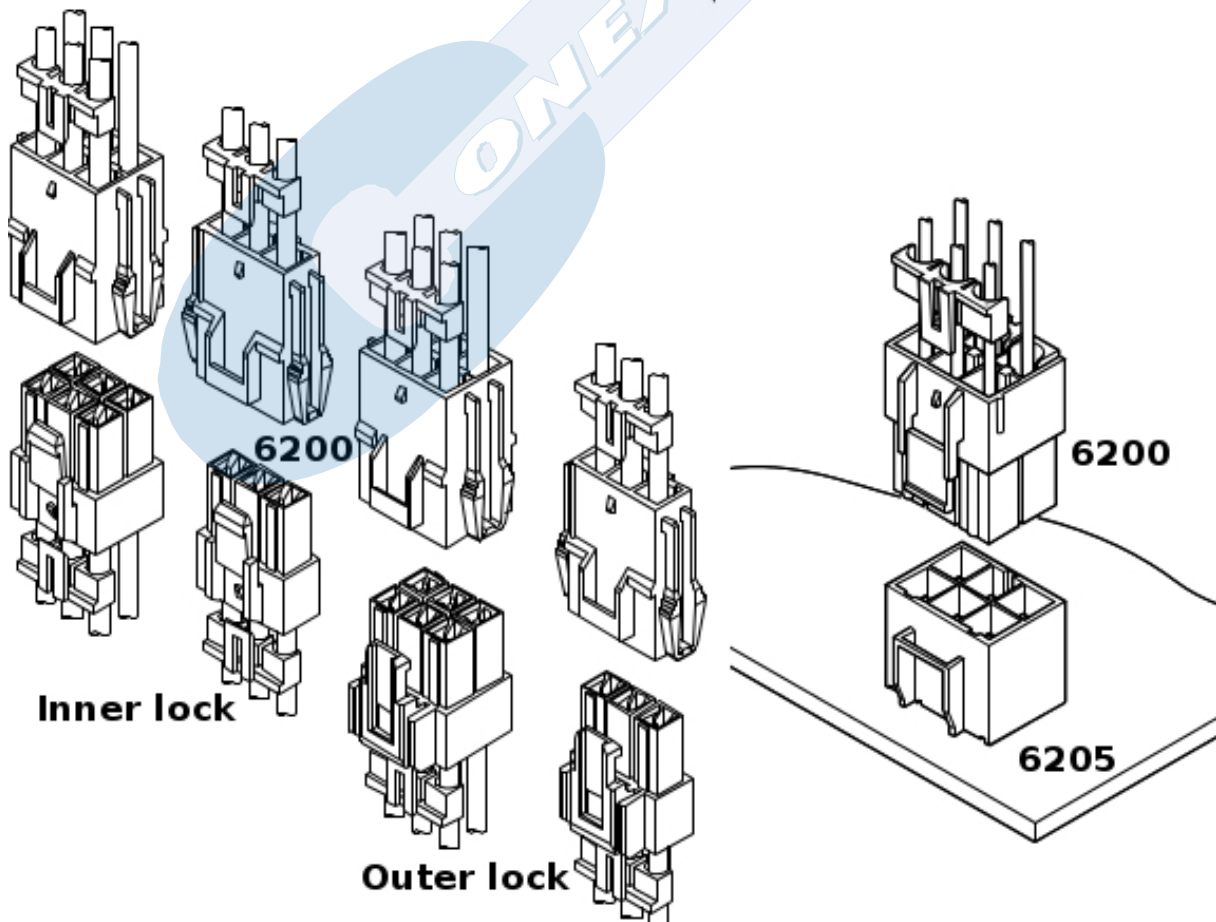
### Dimension Information

### Electrical Features

- Voltage rating: < 600V
- Current rating: < 20 A
- Contact resistance: < 7 mΩ
- Dielectric withstanding voltage: 2000 V AC/minute
- Insulation resistance: >1000 MΩ

### Mechanical Features

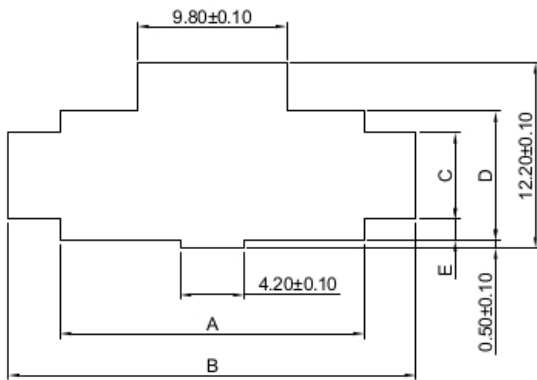
- Contact retention force to the housing: > 3.0 Kgf
- Insertion force to header: < 0.70 Kgf/pin
- Withdrawal force from header: < 0.05 Kgf/pin
- Durability: 25 cycles



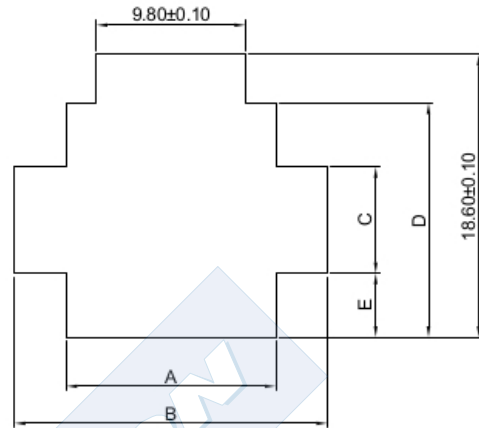
# 6.20 mm. POWER PLUG/RECEPT. HOUSING



**6200 SERIES. 6.20 mm. (0.244") Pitch.**



**Shape I**



**Shape II**

PART NO.	Panel hole shape	Panel hole Dimensions					applicable panel thickness (mm)
		A	B	C	D	E	
6200-2011	I	13.80	20.60	5.70	8.50	1.40	0.5-2.0
6200-2021	I	20.00	26.80	5.70	8.50	1.40	
6200-2031	I	26.20	33.00	5.70	8.50	1.40	
6200-2041	II	13.80	20.60	7.00	15.40	4.20	
6200-2061	II	20.00	26.80	7.00	15.40	4.20	
6200-2081	II	26.20	33.00	7.00	15.40	4.20	
6200-2121	II	38.90	45.40	7.00	15.40	4.20	

Note: 1. Punch holes in the panel according to the sketch and table shown above. Burrs must be removed  
 2. The strength of the panel must be considered when punching two or more holes.  
 3. The connector must be inserted from the same side as the hole is punched

# 6.20 mm. POWER PLUG/RECEPT. HOUSING



**6200 SERIES.** 6.20 mm. (0.244") Pitch.

Plug	Receptacle	Retainer
<p><b>6200-2011</b></p>	<p><b>6200-1011</b></p>	<p><b>6200-0001</b></p>
<p><b>6200-2011</b></p>	<p><b>6200-1021</b></p>	<p><b>6200-0002</b></p>
	<p><b>6200-1022</b></p>	

# 6.20 mm. POWER PLUG/RECEPT. HOUSING



**6200 SERIES.** 6.20 mm. (0.244") Pitch.

Plug	Receptacle	Retainer
<p><b>6200-2031</b></p>	<p><b>6200-1031</b></p> <p><b>6200-1032</b></p>	<p><b>6200-0003</b></p>
	<p><b>6200-1A42</b></p>	<p><b>6200-0004</b></p>

# 6.20 mm. POWER PLUG/RECEPT. HOUSING



**6200 SERIES.** 6.20 mm. (0.244") Pitch.

Plug	Receptacle	Retainer
<p><b>6200-2041</b></p>	<p><b>6200-1041</b></p> <p><b>6200-1042</b></p>	<p><b>6200-0002</b></p>
<p><b>6200-2061</b></p>	<p><b>6200-1061</b></p> <p><b>6200-1062</b></p>	<p><b>6200-0003</b></p>

# 6.20 mm. POWER PLUG/RECEPT. HOUSING



**6200 SERIES. 6.20 mm. (0.244") Pitch.**

Plug	Receptacle	Retainer
<p><b>6200-2081</b></p>	<p><b>6200-1081</b></p>	<p><b>6200-0004</b></p>
	<p><b>6200-1082</b></p>	
<p><b>6200-2121</b></p>	<p><b>6200-1121</b></p>	<p><b>6200-0006</b></p>
	<p><b>6200-1122</b></p>	